

The need for separate food waste collections

BBIA Conference, 15th November 2018

Charlotte Morton, Chief Executive, Anaerobic Digestion & Bioresources Association

[LOG IN](#) [JOIN ADBA](#) [CONTACT US](#) [Facebook](#) [Twitter](#) [LinkedIn](#)


ADBA | Anaerobic Digestion and Bioresources Association

[AD & BIORESOURCES](#) [MEMBERS](#) [OUR WORK](#) [NEWS](#) [EVENTS](#) [JOBS](#) [LIBRARY](#)


WORLD BIOGAS EXPO 2018
 ADBA CHIEF EXECUTIVE CHARLOTTE MORTON: 'TIDE MAY BE TURNING' FOR UK AD INDUSTRY

Events

- 05 October 2018 10:00am - 1:00pm
ADBA Autumn Members' Meeting 2018
- 12 November 2018 8:00am - 1:00pm
ADBA Autumn Finance Forum 2018


UK AD AND WORLD BIOGAS EXPO 2018
 INSIGHTS | INNOVATIONS | INVESTMENT

CLICK HERE TO SEE MORE OF THE SUCCESSFUL 2018 UK AD AND WORLD BIOGAS EXPO, HELD IN EARLY JULY

Latest News

04/09/2018
MEMBER'S PRESS RELEASE: Geotech transitions to OED Environmental Systems with move to Coventry

01/09/2018

Follow us on Twitter

@adbaresources
 2.7k followers
 @wasteconverter
 @wasteconverter to start a growing anaerobic digester @ adbaresources@bioenergy.com/friends



AD & BIORESOURCES NEWS | THE UK ANAEROBIC DIGESTION & BIORESOURCES TRADE ASSOCIATION'S QUARTERLY MAGAZINE

ISSUE 46 | SUMMER 2018 adbaresources.org

SEPARATE FOOD WASTE COLLECTIONS – THE KEY TO GLOBAL SUSTAINABILITY

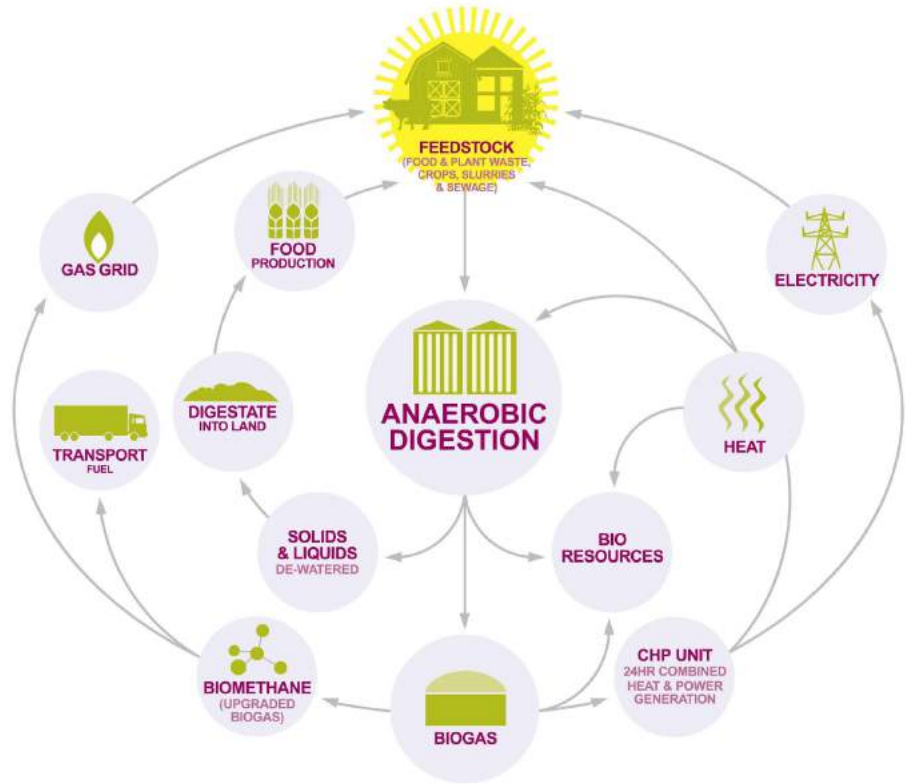
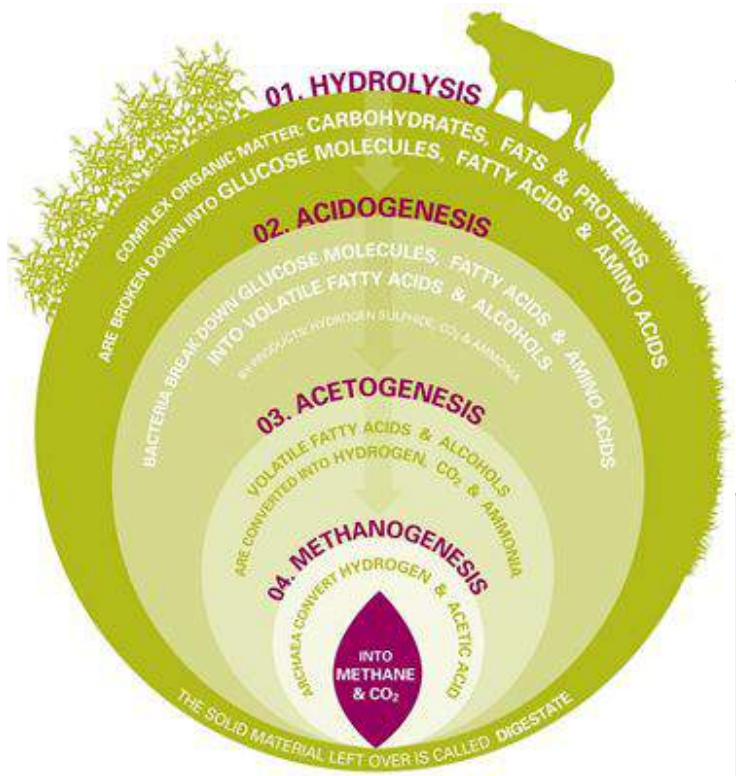


RHI REFORMS FINALLY PASSED

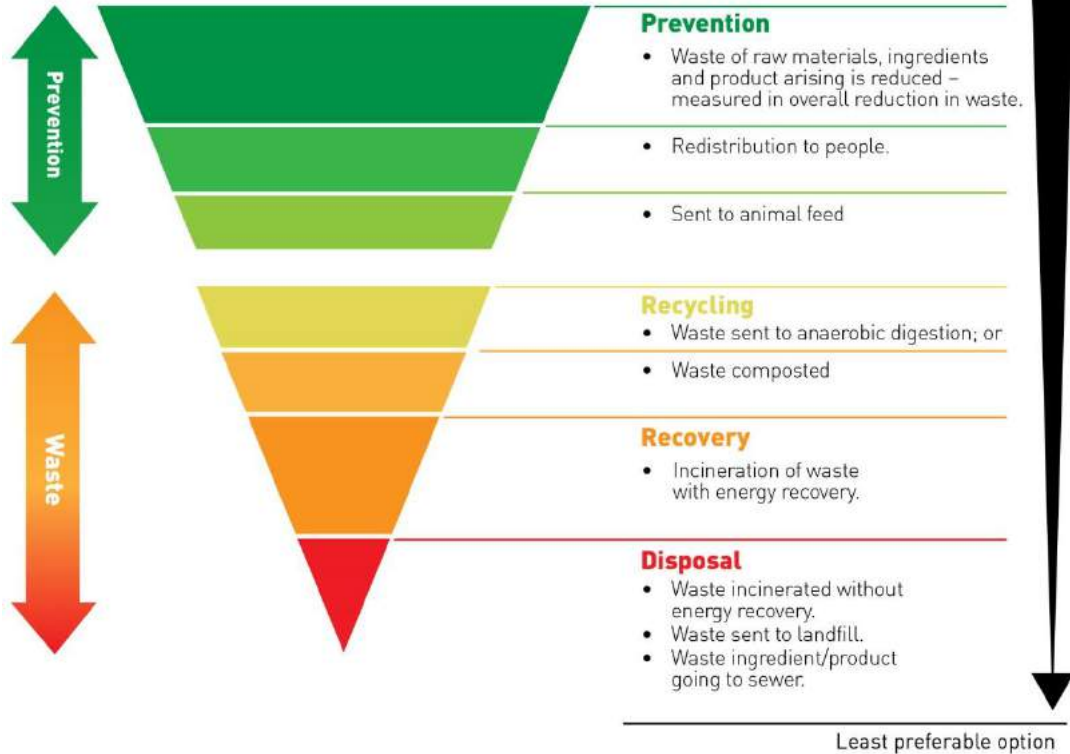
NEW AD REPORT PUBLISHED

UK AD AND WORLD BIOGAS EXPO 2018 PREVIEW

ON-FARM AD



Food and drink material hierarchy



Source: WRAP, 2017

The benefits of collecting and recycling all inedible UK food waste through AD

- Production of 8 terawatt hours of renewable energy, enough to heat 615,000 homes each year
- If diverted from landfill, avoided carbon dioxide emissions of 3.4 million tonnes per year, equivalent to removing 1.65 million cars from the road:
 - ✓ 2 million tonnes per year from replacing fossil energy
 - ✓ 300,000 tonnes from replacing commercial fertilisers
 - ✓ 1.2 million tonnes from preventing methane emissions from landfills

The need for separate food waste collections

- Help prevent food waste by making amount wasted more visible
- Ensure quality of all recyclables (including dry recyclables)
- Necessary for isolating inedible food waste from non-organic waste streams
- Help to raise recycling rates across all waste streams
- Long-term cost savings for local authorities and job creation



Setting an example: Food waste in Milan



- 1.4 million residents
- Food waste collected from 100% of households and commercial activities
- Capture rates of 86%
- Amount collected = 28 kg per person in 2011; 95 kg per person in 2015
- 90% satisfaction and participation levels

What needs to happen now



- Universal, consistent recycling system across whole of UK
- Resources & Waste Strategy must include:
 - EU CEP targets
 - Commitment to Consistency Framework
 - Support for local authorities in introducing separate food waste collections
- Local authorities should look for best opportunities to bring in separate collections

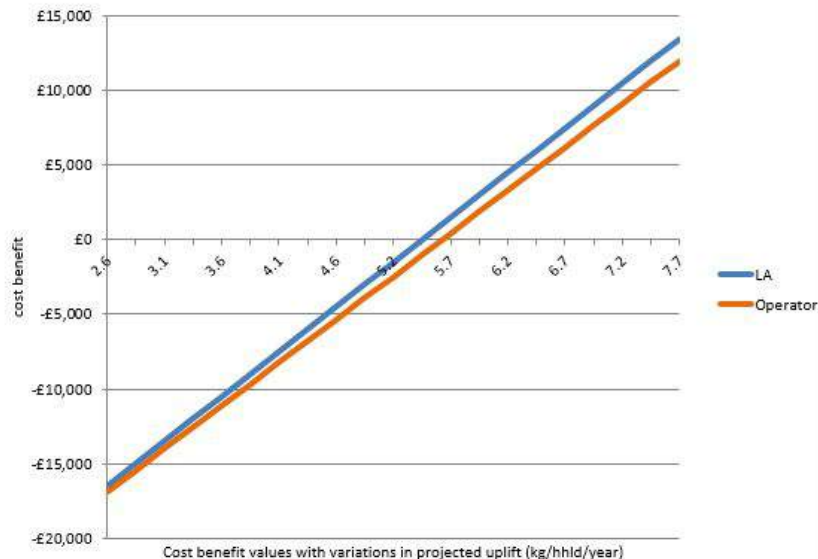
Food Waste Recycling Action Programme



<http://www.wrap.org.uk/content/food-waste-recycling-action-plan>

Cost benefit by Uplift tonnage (using data for Local Authority using tool)

The graph below shows how the CBA result changes as the uplift (kg/hhld/yr) generated by the selected intervention changes.



<http://www.wrap.org.uk/content/cost-benefit-analysis-web-tool>



GLOBAL FOOD WASTE MANAGEMENT: AN IMPLEMENTATION GUIDE FOR CITIES

Full Report



ADBA | NATIONAL CONFERENCE

11 DECEMBER 2018 | ONE GREAT GEORGE STREET, LONDON



Thank you!

[@charlotte_adba](https://twitter.com/charlotte_adba)
[@adbioresources](https://twitter.com/adbioresources)

adbioresources.org

